

Farm for Sale

Busey Farm Brokerage



Farm for Sale

Jack Moore—Maroa Farm 80.99 Taxable acres in Maroa Township

Location

This farm is located 1.0 miles East of Maroa Illinois, and is accessed via Greenswitch Road on the eastern boundary of the farm.

Legal Description

The North Half (N 1/2) of the Southeast Quarter (SE 1/4) of Section 12, Township 18 North, Range 2 East of the 3rd Principal Meridian in Macon County, Illinois, containing ±80 acres.

Listing Price

80.99 Acres @ \$ 10,600.00/acre = \$ 858,494.00

Lease/Possession

The farm is currently under a crop share lease for 2020. The lease for this farm is currently open for 2021.

Contact Information



Corey Zelhart, Listing Broker 217-425-8245 (Office)
corey.zelhart@busey.com 217-493-2712 (Cell)

Nick Suess, Broker 217-425-8279
Hans Carmien, Broker 217-425-8296
Steve Myers, Managing Broker 217-425-8340

busey.com

259 E. South Park—Decatur, IL 62523
Phone: 217-425-8340—Fax 217-362-2724

Disclaimer: The information contained in this brochure is considered accurate. It is subject to verification and no liability for errors or omissions is assumed. There are no warranties, expressed or implied, as to the information herein contained, and it is recommended that an independent inspection of the property be made by all buyers.
Agency: Busey Farm Brokerage, a division of Busey Bank, its agents and representatives, are agents of the Seller

Macon County FSA Data

Farm #	1123	Tract #	129
Total Acres:	81.18	Cropland Acres:	81.18
Corn Base Acres:	40.0	Soy Base Acres:	40.0
Farm Program:	ARC County Beans/PLC Corn		

Price Loss Coverage (PLC) Yields

Corn Yield: 140 **Soybean Yield:** 44

Real Estate Tax Information

Parcel ID #	Acres	2019 Assessed Value	2019 Taxes Payable 2020
10-02-12-400-001	80.99	\$ 49,864.00	\$ 3,784.32

Yield History

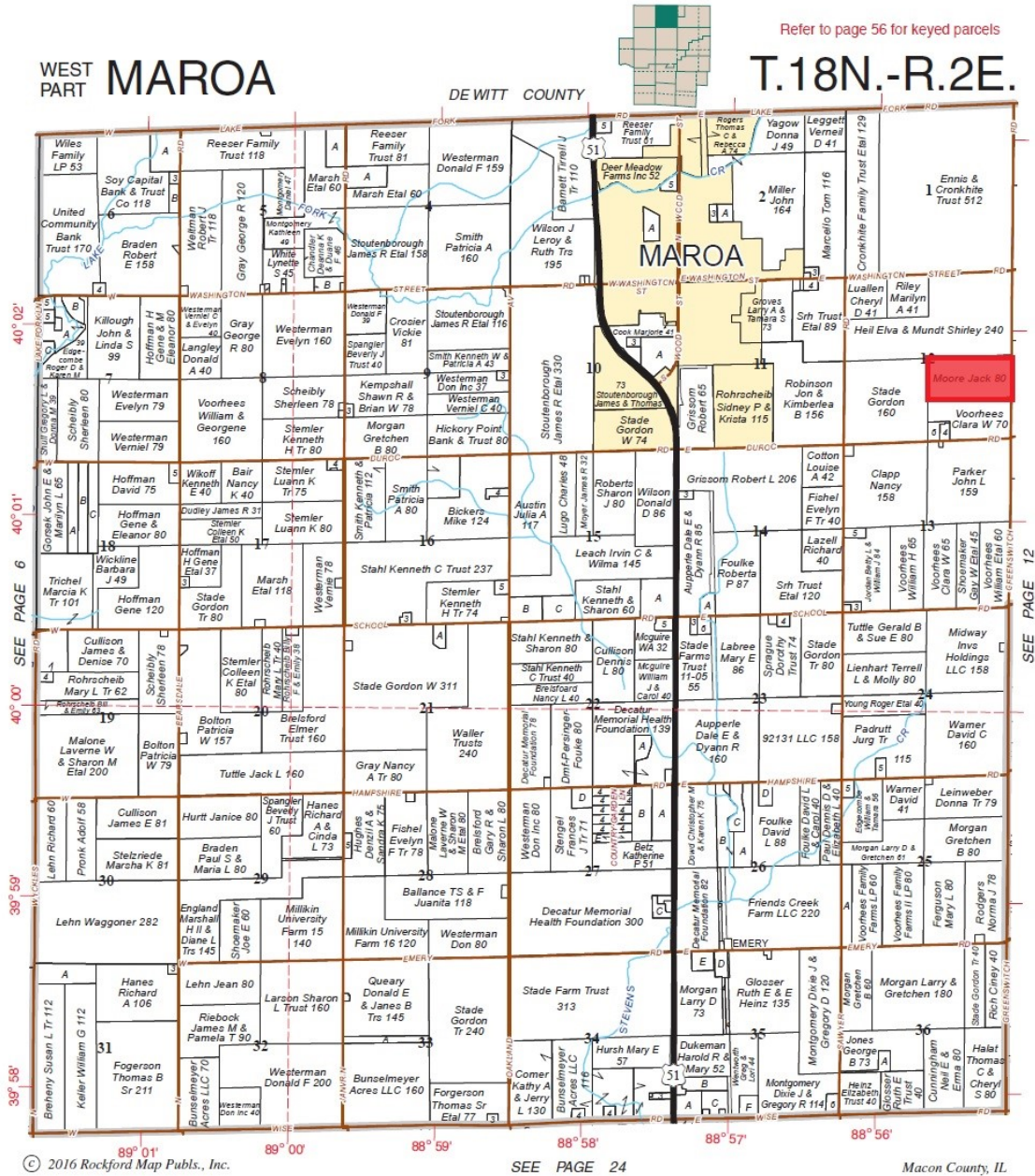
	Corn	Soybeans
2019	219	70
2018	257	71
2017	223	66
2016	239	71
2015	207	76

Wind

This farm lies within the footprint of a potential wind farm and discussions have been had with project developer.

Farm for Sale

Plat Map



Reprinted with permission of Rockford Map Publishers, Inc.



Licensed Real Estate Broker Corporation

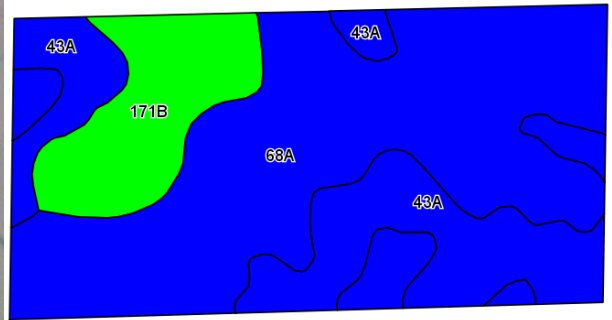
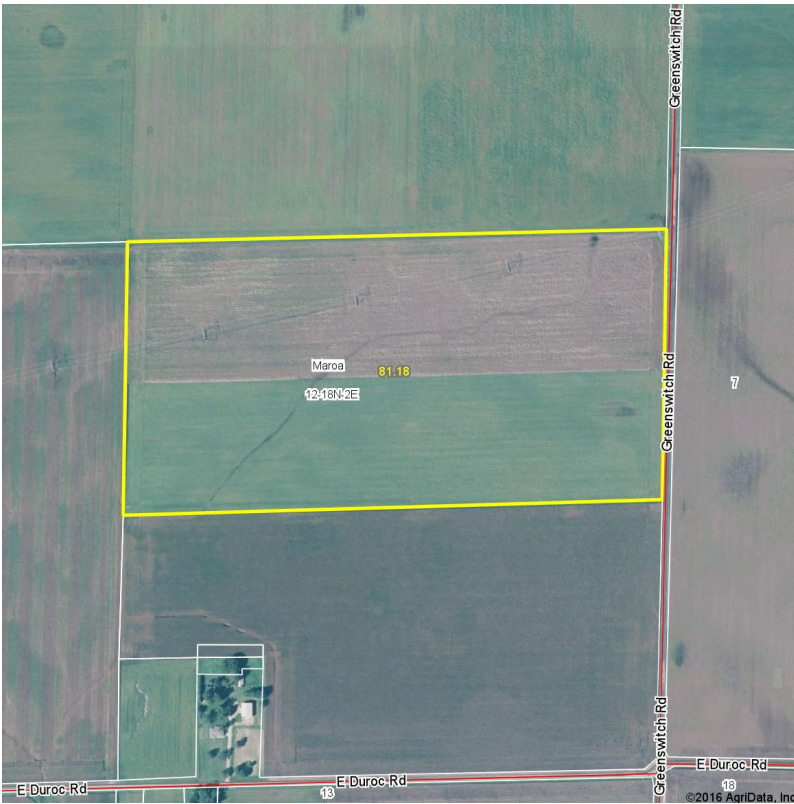
Corey Zelhart, Listing Broker
Nick Suess, Broker
Hans Carmien, Broker
Steve Myers, Managing Broker

Phone 217-425-8245
Phone 217-425-8296
Phone 217-425-8279
Phone 217-425-8340

Disclaimer: The information contained in this brochure is considered accurate. It is subject to verification and no liability for errors or omissions is assumed. There are no warranties, expressed or implied, as to the information herein contained, and it is recommended that an independent inspection of the property be made by all buyers.
Agency: Busey Farm Brokerage, a division of Busey Bank, its agents and representatives, are agents of the Seller

Farm for Sale

Aerial Map and Soil Information



©2016 AgriData, Inc.

Area Symbol: IL115, Soil Area Version: 12

Code	Soil Description	Acres	Percent of field	Il. State Productivity Index Legend	Com Bu/A	Soybeans Bu/A	Crop productivity index for optimum management
68A	Sable silty clay loam, 0 to 2 percent slopes	47.95	59.1%		192	63	143
43A	Ipava silt loam, 0 to 2 percent slopes	20.89	25.7%		191	62	142
**171B	Catlin silt loam, 2 to 5 percent slopes	12.34	15.2%		**185	**58	**137
Weighted Average					190.7	62	141.8



Licensed Real Estate Broker Corporation

Corey Zelhart, Listing Broker
Nick Suess, Broker
Hans Carmien, Broker
Steve Myers, Managing Broker

Phone 217-425-8245
Phone 217-425-8296
Phone 217-425-8279
Phone 217-425-8340

Disclaimer: The information contained in this brochure is considered accurate. It is subject to verification and no liability for errors or omissions is assumed. There are no warranties, expressed or implied, as to the information herein contained, and it is recommended that an independent inspection of the property be made by all buyers.
Agency: Busey Farm Brokerage, a division of Busey Bank, its agents and representatives, are agents of the Seller