

Farm for Sale

Busey Farm Brokerage



VERMILLION COUNTY – FARM FOR SALE

Schumacher, etal Farm

160.86 Taxable Acres
Vance Township, Vermillion County, Illinois

Location/General Information

The Schumacher, etal farm is located two miles east of Homer, IL. It is bordered by Catlin-Homer (CR 1220N) Road on the South, and CR 130E on the East.

Legal Description

The West ½ of the Northwest ¼ of Section 2 and the East ½ of the NE ¼ of Section 3 Township 18 North Range 14 West. Commonly known as Vance Township Vermillion County IL

Listing Price

160.86 Acres @ \$13,900.00/A = \$2,235,954.00

Lease/Possession

The farm is leased on a 50/50 crop share agreement for the 2021 crop year. Owners share of the lease is negotiable, dependent on closing date.

Contact Information

Steve Myers	Hans Carmien
Managing Broker	Broker
217-351-2757	217-351-2767
Cell: 309-275-4402	Cell: 217-840-7171

busey.com

3002. W Windsor Rd Champaign, IL 61822
Phone: 217-351-7101 Fax: 217-351-2848

Vermillion County FSA Data

Farm #	9569	Tract #	3136
Total Acres:	161.39	Tillable Acres:	158.2
Corn Base:	79.1	Soybean Base:	79.1
HEL:	None	Program:	PLC/ARC
PLC Yield	168	PLC Yield SB:	68

Real Estate Tax Information

Parcel ID#	Acres	2020 Assessed Value	2019 Taxes Payable 2020
25-02-100-001	25.00	\$17,187.00	\$1,458.68
25-02-100-009	54.08	\$36,257.00	\$3,077.18
25-03-200-003	40.00	\$28,049.00	\$2,380.56
25-03-200-004	41.78	\$27,988.00	\$2,375.38

Yield History

	Corn	SB
2020	245.3	72.0
2019	215.4	67.9
2018	239.6	75.4
2017	221.4	81.3
2016	225.6	67.2

Soil Test (2017)

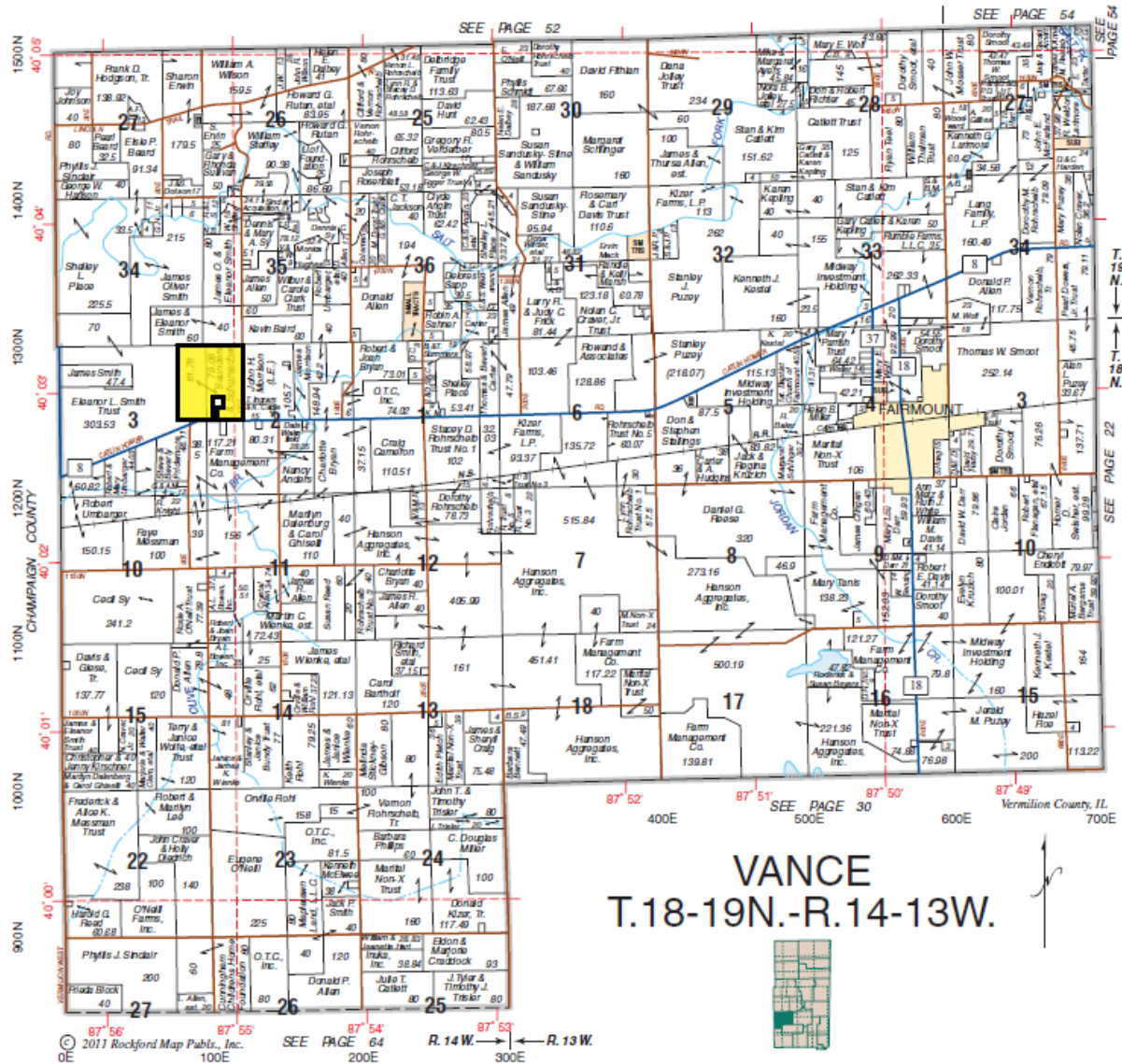
PH: 6.1 P: 63 K: 312

Busey FARM BROKERAGE

Disclaimer: The information contained in this brochure is considered accurate. It is subject to verification and no liability for errors or omissions is assumed. There are no warranties, expressed or implied, as to the information herein contained, and it is recommended that an independent inspection of the property be made by all buyers.

Agency: Busey Farm Brokerage, a division of Busey Bank, its agents, and representatives, are agents of the Seller

Schumacher, etal Farm

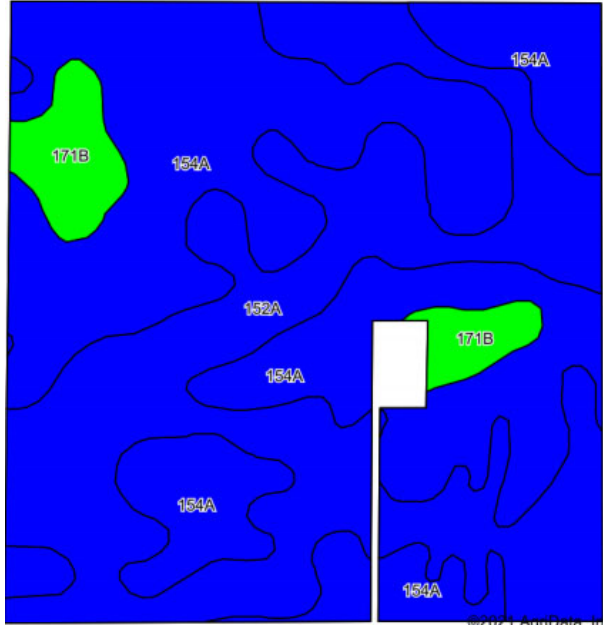


Reprinted with permission from Rockford Map Publishers Inc.

Disclaimer: The information contained in this brochure is considered accurate. It is subject to verification and no liability for errors or omissions is assumed. There are no warranties, expressed or implied, as to the information herein contained, and it is recommended that an independent inspection of the property be made by all buyers.

Agency: Busey Farm Brokerage, a division of Busey Bank, its agents, and representatives, are agents of the Seller

Aerial Map and Soil Information



*Note: The building site **is not** a part of this farm

Soil Code	Soil Description	Acres	Percent of Field	Corn Bu/A	Soy Bu/A	Crop Productivity Index for optimum management
154A	Flanagan Silt Loam	86.31	53.7%	194	63	144
152A	Drummer Silt Loam	65.51	40.7%	195	63	144
171B	Catlin Silt Loam	9.04	5.6%	185	58	137
Weighted Average				193.9	62.7	143.6



Licensed Real Estate Broker Corporation

Steve Myers, Managing Broker

Phone: 217-351-2757

Cell: 309-275-4402

steve.myers@busey.com

Hans Carmien, Broker

Phone: 217-351-2767

Cell: 217-840-7171

hans.carmien@busey.com

Disclaimer: The information contained in this brochure is considered accurate. It is subject to verification and no liability for errors or omissions is assumed. There are no warranties, expressed or implied, as to the information herein contained, and it is recommended that an independent inspection of the property be made by all buyers.

Agency: Busey Farm Brokerage, a division of Busey Bank, its agents, and representatives, are agents of the Seller