

Farm For Sale

Busey Farm Brokerage



COLES COUNTY - FARM FOR SALE

The Ford Living Trust Farm 90.0 Taxable Acres Seven Hickory Township, Coles County, Illinois

Listing Price

90.0 Ac x \$16,500/Ac = \$1,485,000

Legal Description

The Northwest 1/4 of Section 19, Township 14 N, Range 8E of the Third Principal Meridian, Coles County, Illinois

Lease/Possession

The Farm is subject to a 50/50 crop share lease for 2022. There is a Wind Energy lease in place with Coles Wind, LLC. Details available upon request.

Contact Information



Steve Myers	Hans Carmien
Managing Broker	Broker
O: 309-962-2901	O: 217-351-2767
C: 309-275-4402	C: 217-840-7171

busey.com

3002 W. Windsor Rd., Champaign, IL 61822
Phone: 217-353-7101 Fax: 217-351-2848

Location

The Farm is located on the southeast corner of the intersection of County Roads 1900N and 1200E 4 miles southeast of Arcola.

Real Estate Tax Information

Parcel ID #	Acres	2020 Assessed Value	2020 Taxes Payable 2021
12-0-00641-000	90.0	\$50,617	\$3,882.16

Coles County FSA Information

Farm #	7457	Tract #	10077
Total Acres:	89.07	Cropland Acres:	89.07
Corn Base:	44.50	Soybean Base:	44.50
Farm Program:	ARC-County Soy/PLC Corn		

Price Loss Coverage (PLC) Yields

Corn Yield:	185	Soybean Yield:	52
-------------	-----	----------------	----

Yield History

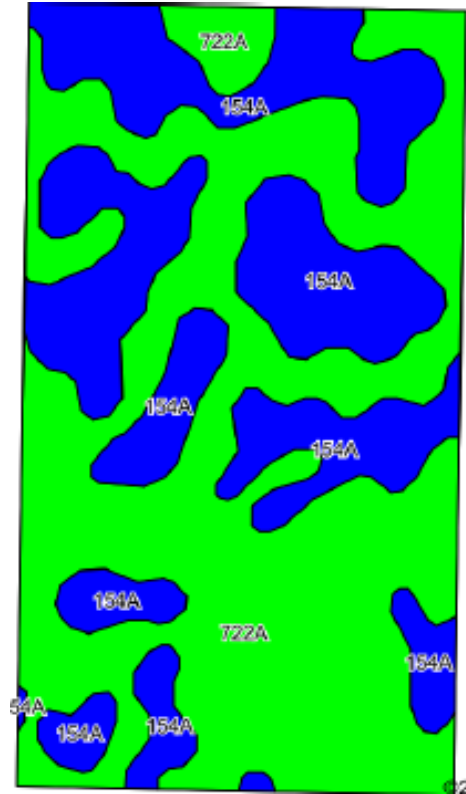
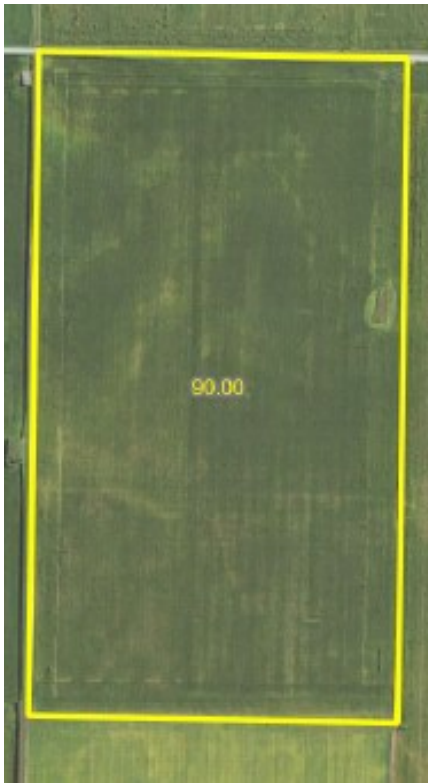
	Corn	Soybeans
2021	TBA	X
2020	X	63
2019	212	X
2018	X	68
2017	X	67
2016	208	X

2018 Soil Test Data

pH: 6.0 P: 75 K: 401

Disclaimer: The information contained in this brochure is considered accurate. It is subject to verification and no liability for errors or omissions is assumed. There are no warranties, expressed or implied, as to the information herein contained, and it is recommended that an independent inspection of the property be made by all buyers.
Agency: Busey Farm Brokerage, a division of Busey Bank, its agents and representatives, are agents of the Seller

Aerial Map and Soil Information



Soil Code	Soil Description	Acres	Percent of Field	Corn Bu/A	Soy Bu/A	Crop Productivity Index for optimum management
722 A	Drummer-Milford Silty Clay Loam	54.75	60.8%	184	60	137
154 A	Flanagan Silt Loam	35.25	39.2%	194	63	144
Weighted Average				187.9	61.2	139.7



Licensed Real Estate Broker Corporation

Steve Myers, Managing Broker

Phone: 309-962-2901

Cell: 309-275-4402

Steve.Myers@busey.com

Hans Carmien, Broker

Phone: 217-840-7171

Cell: 217-840-7171

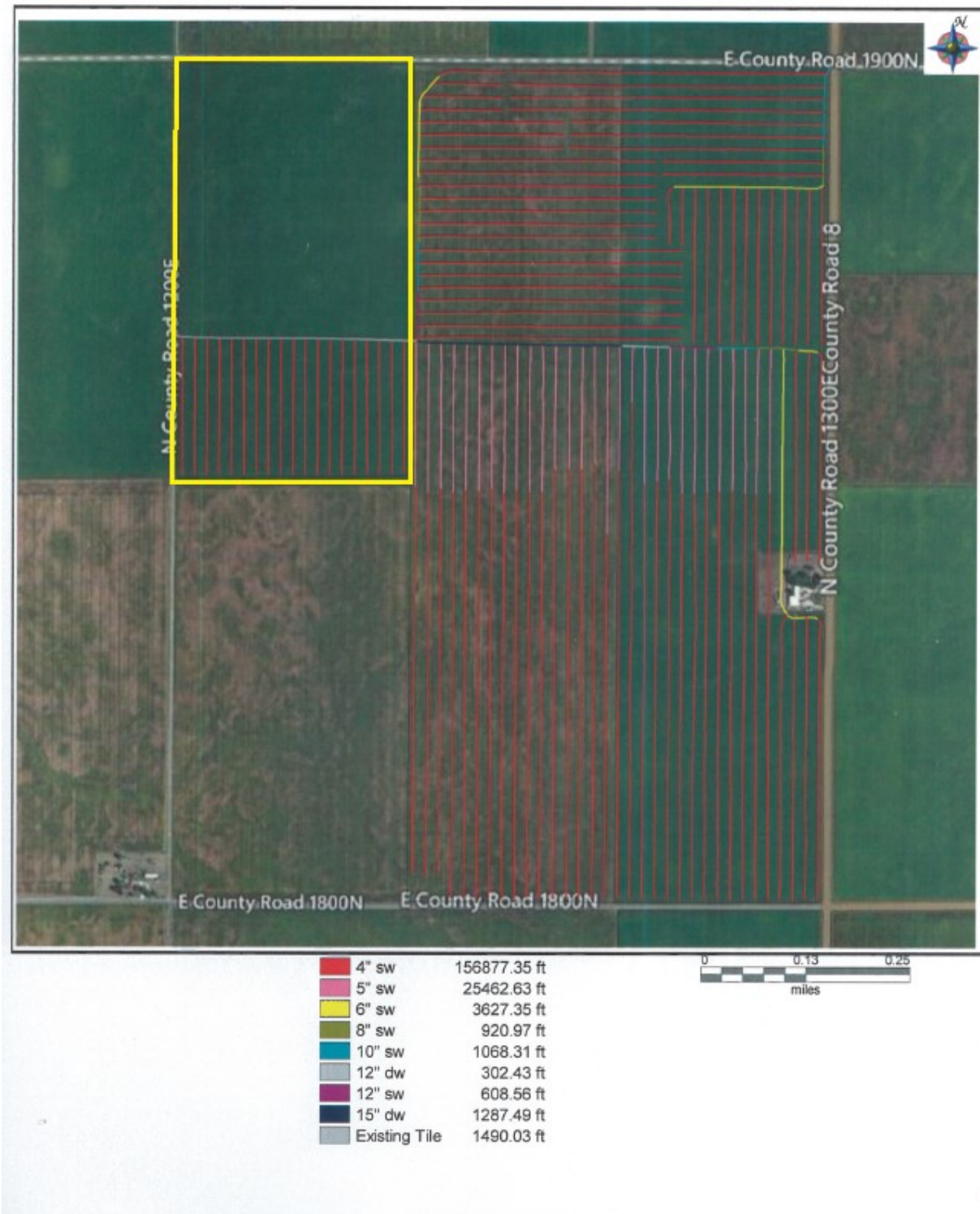
Hans.Carmien@busey.com

Disclaimer: The information contained in this brochure is considered accurate. It is subject to verification and no liability for errors or omissions is assumed. There are no warranties, expressed or implied, as to the information herein contained, and it is recommended that an independent inspection of the property be made by all buyers.

Agency: Busey Farm Brokerage, a division of Busey Bank, its agents and representatives, are agents of the Seller

Tile Map

Tile Installed in 2015.



Disclaimer: The information contained in this brochure is considered accurate. It is subject to verification and no liability for errors or omissions is assumed. There are no warranties, expressed or implied, as to the information herein contained, and it is recommended that an independent inspection of the property be made by all buyers.

Agency: Busey Farm Brokerage, a division of Busey Bank, its agents and representatives, are agents of the Seller